



Sail Indonesia



web site www.sailindonesia.net

email mail@sailindonesia.net

Sail Indonesia 2012 Information Booklet

TABLE OF CONTENTS

Sail Indonesia Website and Contact Information	4
Purpose of this document	4
Your Arrival in Darwin	4
Weather and Tides	4
Australian Customs and Quarantine	4
Contacting Sail Indonesia staff when you arrive in Darwin	5
Ramadan	5
Schedule of Events 2012	5
Checking out of Indonesia	6
Indonesian Bureaucracy and its challenges	6
Yacht Import Procedures	7
Darwin Pre Departure Functions	7
Entry Costs, Procedure and Information	8
BEFORE YOU LEAVE DARWIN	9
Australian Customs and Duty Free Fuel Information	9
CAIT and Visa Matters	9
Vaccinations and Other Health Matters	10
Rally Radio Frequencies and Schedule	10
Indonesian Charts and Darwin Tidal Information	10
Travel Warnings	10
YOUR ARRIVAL IN INDONESIA	10
Your Arrival in Indonesia, Kupang or Saumlaki	11
Anchorage in Indonesia	11
Indonesian Inwards Customs and Quarantine	11
Dinghy Service	11
Rally Office in Indonesia	11
Guns Guns Guns Guns	12
During your stay in Indonesia	12
Bahasa Indonesia	12
LPG Bottles	12
Weather	12
Indonesian Currency	12
How you can help	12
Customs and Dress in Indonesia	13
Duty Free Alcohol	13
Different Field Different Grasshopper	13
Yacht Spare Parts and Importation	13
Events at your port of arrival	13
Local Information Desk and Guides	13
Shopping	13
Local Transport \	13
Electricity, internet and phone facilities	14
Water, Food and Provisioning in Indonesia	14

Diesel Fuel	14
Medical Services	14
YOUR ROUTE THROUGH INDONESIA	14
Security and Theft	14
The Port of Bali	15
Visa Extensions in Indonesia	15
Visa Extensions in Bali	15
Beyond Indonesia	16
GUNS in Indonesia and beyond	16
Drugs	16
Sail Indonesia's Privacy Policy	16
Final Notes	16
Sail Indonesia Preliminary Program Schedule Pages 16 to 20	16
Kupang Anchorage	21
Saumlaki Anchorage	22
Banda Anchorage	23

SAIL INDONESIA WEB SITE

Sail Indonesia is an Internet based event and is promoted, organised and managed using our website and email only. We do not use telephone, post or facsimile, however during the four weeks before the rally departs from Darwin there will be contact phone numbers given to all participants so they can contact our team who will then be working in Darwin.

The News page of the Sail Indonesia web site at <http://www.sailindonesia.net/news/news.php> has the latest information and updates as well as links to useful web sites. Stories, blogs and websites from sailors who have made this journey before can be read at <http://www.sailindonesia.net/news/stories.php>. There is far too much information to mention here so please take time to look at it before you go to Indonesia.

ORGANIZER CONTACT DETAILS

All correspondence to Sail Indonesia should be sent to our email at mail@sailindonesia.net. **Please include the name of your yacht** in the "subject section" of all your emails.

PURPOSE OF THIS DOCUMENT

This Pre-Entry document is to give you a summary of the important information on our web site from a sailor's perspective and to give intending participants an overview of planned events as well as the requirements of entry, departure from Darwin, entry into Indonesia, the program of events in Indonesia as well as other general information. It is in no way a complete guide to Indonesia and a good guidebook will be most useful to you. Indonesia is an amazing country and we hope as our previous participants have, that you will discover this beautiful county, with its diverse regions and most of all the wonderful and friendly people and leave with fond memories. All countries have rules and regulations for visitors and Indonesia has more than its share.

The information contained in this document and all information Sail Indonesia provides to you in our publications and on our website is the OFFICIAL government information, regarding such things as Indonesian Visa renewal, entering intermediate ports in Indonesia, filling of gas bottles, checking out from Indonesia. You will hear and read from previous yacht's blogs and websites, many participants before you have done these things in different ways but we can only advise you of the official regulations.

This document is not your entry form, and it should always be read together with the information provided on our website, that is updated regularly. This document covers preliminary information only, and when you arrive in Darwin you will be given additional information that is more detailed and the final information update before you leave will be given to you at the Rally Technical Briefing in Darwin on July 24.

YOUR ARRIVAL IN DARWIN

We will have staff working in Darwin one month before the departure date; they will meet with you when you arrive and give you the latest information and be able to assist you while you are there. They will have mobile phones and these numbers will be announced on the daily VHF radio net at 08:10 Channel 77 which will begin on June 29 Monday to Saturday, one month before the rally departs from Darwin. You should plan to arrive in Darwin at least 2 – 3 weeks prior to the date of departure for Indonesia to allow you time to arrange your visas for Indonesia, take on stores and for those last minute chores and repairs. For all locations and details about the Anchorages and Marinas in Darwin, please see the DARWIN dropdown our website.

Weather and Tides

If you are leaving Cape York and heading for Darwin local weather information for the coast of the Northern Territory will not be easy to get. The Australian Commission (ABC) radio stations transmit periodic local, coastal weather updates and warnings 24 hours per day. To hear these forecasts tune to Gove on 8GO located at 12° 17' and 136° 50' on 990 Khz AM and from Darwin 8DDD on 105.7 FM and Radio National on 657 KHz AM.

The tidal range in Darwin is 8 meters and the tide tables for 2012 can be downloaded from our website from the LINKS / Weather and Tides page. All information regarding Marine Services and Marinas in Darwin can also be downloaded from our website.

Australian Customs and Quarantine

Australian Customs and Quarantine

If your yacht is not yet in Australia, please go to the Australian Customs and Australian Quarantine web sites for further information. Australian Customs require that yachts arriving in Australia must give notice of arrival at least 4 days before arrival at their first port in Australia, see <http://www.customs.gov.au/site/page4358.asp> for all details.. The Australian Customs office in Darwin is located at 26 Lindsay St; phone +61 1300 363 163 or +61 1300 558 282

The Australian Quarantine Service may want to inspect the hull of your yachts for unwanted marine organisms when

you arrive at your first port of call in Australia.

Also in Darwin there are additional Northern Territory Government regulations regarding the entry of yachts into Darwin's marinas to prevent the spread of marine pests. In some cases your yacht will need to be inspected by divers, or hauled out and treated if necessary to kill any of these marine pests before you can go into a marina.

The marina managers will be able to help you arrange these inspections. The hull inspections are free but any haul-out costs will be at the yacht owner's expense. For all information, visit the NT Government Fisheries web site at <http://www.nt.gov.au/d/Fisheries/index.cfm?header=Vessel%20Inspections>

CONTACT WITH SAIL INDONESIA ORGANISERS WHEN YOU ARRIVE IN DARWIN

Sail Indonesia does not have an office in Darwin; on arrival there, you will need to make contact with the Sail Indonesia team members when you arrive by one of the following means;

- 1 By email to mail@sailindonesia.net
- 2 When you arrive in Darwin we will also contact you by your cell (mobile) phone.
- 2 By VHF Radio Monday to Saturday on Channel 77 at 0810 CST daily commencing Friday 29 June 2012.
- 3 Meetings that will be scheduled at the various Marinas and Sailing Clubs in Darwin where you will be met by our staff. These meetings will commence Monday July 2 and details of our phone numbers, meeting points and times will be posted on notice boards at marinas and yacht clubs throughout Darwin and also advised on the VHF net.

At these scheduled meetings, each yacht skipper will be given a welcome package containing:

1. The latest updated **Information Document** regarding the Rally, including your outgoing Australian Customs clearance procedures and arrangements for purchase of duty free fuel and goods, including bulk wine and meat.
2. A **CD** containing the latest cruising guides and information for Indonesia, Malaysia and Thailand,
3. **Sail Indonesia Rally Identification Badges** for entry into the various official functions in Darwin and Indonesia,
4. **Rally T-Shirt Order Forms.** Sail Indonesia does not sell T Shirts; but you can buy them direct from the manufacturer. To keep costs down they must be ordered and paid for in advance using the order form provided by Sail Indonesia Organizers; they will then be made in one lot and delivered to you at the Rally Barbeque at the Darwin Sailing Club on July 20.
5. You will be able to get answers to any specific questions.

Please listen to the VHF net each morning on Channel 77 at 0810 hours for the latest information.

RAMADAN

Indonesia has the largest number of followers of Islam of any country in the world. Ramadan occurs in the ninth month of the Islamic calendar and is the Holy Month of Fasting and this year coincides with your visit. In 2012, Ramadan begins on July 20 and continues through until August 18. Ramadan is a time of worship and contemplation and during this month the reception at destinations you will visit may be subdued and Muslims round the world spend this month fasting during the hours from dawn to sunset. Sometimes shops may be closed during the day but will open after sunset until late at night. During Ramadan in the ports you will visit some offices and facilities may be either closed or only open for a short time each day and on Fridays may be closed all day.

2012 SCHEDULE OF EVENTS

The events will be jointly organized by Sail Morotai, Sail Indonesia, the Indonesian Ministry of Marine Affairs and Fisheries, the Provincial Administration of Maluku, the Ministry of Culture and Tourism, the Navy Force of Indonesia and supported by the Directorate General of Immigration as well as other government institutions.

For 2012 there are two choices available to you. After your first port in Indonesia you do not need to follow the rally schedule, you are not expected to attend every scheduled event and you are free to make your own way across Indonesia and just participate in the events that suit your personal schedule.

Sail Indonesia is a moving program of events, if you arrive at destinations before or after the scheduled dates you will not receive the same level of support as our staff will be busy in other places and not be there to assist you.

For 2012 all yachts will leave Darwin on July 28 at 11 am and there will be two options for your first port of call and following routes through Indonesia, either Kupang or Saumlaki.

Option One

As in past years first to Kupang, position 10° 16' 123° 54 430 miles WNW from Darwin, from there you can then sail west to follow our traditional route known as the Western Passage as detailed in the last pages of this document and is also on the map on the home page of our website at www.sailindonesia.net, taking you through Indonesia to the island of Bintan just south of Singapore.

Option Two

Sail to Saumlaki at position 07° 54' and 131° 20' 500 miles north of Darwin and from there, you can sail on to Banda and Buru and Ternate for the festivities there. After Ternate you can sail to the west via Wakatobi and Hoga and then on to Flores or Bali to rejoin the group of yachts that first went to Kupang then follow our traditional route known as the Western Passage that will take you through the rest of Indonesia to Bintan or Batam just south of Singapore.

Please note that Saumlaki has only recently become a registered "Port of Entry" in Indonesia and Customs and Immigration officials may have to be flown in from Ambon on July 26th for a week especially to process all yachts that arrive in the fleet from Darwin. If you are late into Saumlaki and the Customs may have left and gone back to Ambon so you will NOT be able to check into Indonesia at Saumlaki and you will need to go directly to Ambon as your first port of call.

MOST IMPORTANT CHECKING OUT OF INDONESIA

It is a condition of your entry with Sail Indonesia that if you do not keep to the scheduled Rally Route please inform the support staff who will be at each official stopover destination through the country of the date and at which port you will check out from Indonesia, also please notify us at mail@sailindonesia.net

INDONESIA AND ITS CHALLENGES

Indonesian Bureaucracy

Since 1998 Indonesia has undergone major changes in the way the country is administered. The power formerly in the hands of the Central Government in Jakarta has been slowly given out to the provinces. The result of this is that often there is no uniformity of rules and regulations especially for western type cruising yachts and consequently, the regulations can and may often be different at each port or stopover that you will visit. This confusion is sometimes used by the government officials for their own personal financial gain.

The paragraphs below is taken from a letter to the editor in the Jakarta Post in October 2009 by an Indonesian citizen about the difficulties that he encountered when arriving at Jakarta's airport and shows that wherever you go in Indonesia corruption and its associated confusion and problems are encountered everyday.

Corruption at the Jakarta Airport could be stopped overnight, it would be easy and quite simple, but nobody has the will to stop it. Simply accept that this is life in Indonesia, they don't see it as dishonest, just people trying to make money, to supplement their low wages, and that they are in positions of power to do it.

It happens in third world countries around the planet, Indonesia is no different, and although I hate it as much as the next person, it will not change until the national will is there to change it. Once through the airport, you will experience some of the world's best scammers, but also one of the world's most interesting countries and lovely people. So in the end, just take the good with the bad, and the good will outweigh the bad a hundredfold.

There is not any easy way to manage the confusion that will confront you as you move from port to port each with their own different interpretation and implementation of the shipping regulations. Even today the paperwork for shipping is still a complex and often meaningless array of not 20th but 19th century forms and documents. For example you may be given a "De-ratting Certificate" or a large green health book called "Buku Kesehatan" which may be important in some ports but at another port, the port officials may not even be interested in it. To avoid complicating the situation you should not produce either of these documents at any following port unless you are specifically asked for them. The reason for this is that if you offer it and the officials don't know what to do with it may cause you delays. Both these documents are for use on ships over 500 tons, however in some ports every vessel is issued with them.

Again for example in Saumlaki in 2009 even though there had been 12 months of preparations for the arrival of the Sail Indonesia fleet of 120 yachts in Saumlaki there were no Immigration staff there to process the incoming crew visas and staff then had to be flown in the next day from Tual.

Since 2004 foreign flagged yachts are now only required to check with Port Officials at their Port of Entry and Port of Exit. There is now no requirement for yachts to check in and out of each intermediate port as was required in the past and, of course, you had to pay for this procedure. However this process has now been replaced by an "Anchoring Fee" for which there is of course a cost of \$5-10 USD at each stopover and you may be asked to produce your yacht's paperwork yet again.

Indonesian Yacht Temporary Import Documentation

As in past years Sail Indonesia will arrange all your Import and Export documentation as detailed in the following paragraphs so you will not be bothered by the these regulations.

Indonesia's Customs regulations concerning the temporary entry of foreign flagged yachts and other marine pleasure craft were changed when the Indonesian Customs and Maritime Tourism Regulations, PERATURAN PRESIDEN REPUBLIK INDONESIA, NOMOR 79 TAHUN 2011, TENTANG KUNJUNGAN KAPAL WISATA (YACHT) ASING KE INDONESIA were signed into law by the Indonesian President on October 31 2011.

The previous requirement that a Monetary Bond be paid at the time any yacht entered Indonesia has been cancelled and replaced with new and more welcoming regulations regarding the entry of foreign yachts into the country. These regulations came into effect on December 3 2011 now require that any visiting yacht must complete the PIB (Temporary Import Documentation) the port of entry into Indonesia and to process your PIB documentation a letter of guarantee is needed from any of the following Approved Bodies;

- A. Government Officials of the Central Government of the level Echelon I or equivalent.
- B. Government Officials of a Local Government Office of the level Echelon II or equivalent which act as an organizer of the a foreign visit tour boat (yacht) in their region.
- C. Organizers of foreign tourist ship and yacht visits.
- D. General agent.

After your PIB has been processed a yacht is then clear to cruise any destination in Indonesia as listed on their CAIT and will be covered by this initial paperwork process. The PIB is extendable, along with the CAIT in multiples of 3 months up to a total of 3 years unbroken. It is also proposed that in the future there will be changes to the CAIT application procedure to make it easier.

At your final port of call in Indonesia, the boat must be exported using PEB (Export Documentation) that has again been simplified into an easy piece of paperwork that can be processed by the ship's local representative.

To comply with these regulations any Organization such as Sail Indonesia planning to hold an event in Indonesia is for them to use an Approved Indonesian Body as mentioned above to arrange the PIB and PEB documentation.

When any event is over the Approved Body that provided the first Letter of Guarantee will then arrange the PEB (Export Documentation) to show Indonesian Customs that all items mentioned in the initial letter of guarantee (in this case all participating yachts) have left the country. If the Approved Body cannot do this, then that Approved Body becomes responsible for the payment of the Import Duty. As a result of this situation it is a condition of you entering Sail Indonesia that you will advise us the name of the port and date that you and your yacht checked out from Indonesia.

There will be a period of uncertainty as these new regulations are implemented across a vast maritime country as all local offices and authorities must be informed of how to correctly apply the new regulations.

The implementation of these new regulations is still becoming clear, we have information (dated December 3 2011) and understand that any yacht will need a local agent to do the temporary import. Also at some ports there is a now a requirement in some ports that the boat captain or agent must submit an RKSP Rencana Kedatangan Sarana Pengangkut (Notice of Arrival) at least 24 hours before the boat arrives otherwise there may be penalty of Rp.5.000.000 around \$550 USD.

This Customs information is according to the Government Regulations and is the best we have at any time and as explained above it may not be followed by all Customs Officials in all ports. This information is updated on our website at <http://www.sailindonesia.net/news/importduty.php> with the latest information as we become aware of it but there may sometimes be local variations and implementation of these regulations in different ports, as such we can take no responsibility for the accuracy of this information for yachts that are not part of Sail Indonesia.

DARWIN PRE DEPARTURE FUNCTIONS

The **Start** from Darwin of Sail Indonesia will be at 11:00 on **Saturday July 28 2012**.

A complimentary **BBQ dinner** for participants will be held at the Darwin Sailing Club in Fannie bay on the evening of **Friday 20 July 2012**. This is an opportunity for you to meet the other participants in an informal setting before the start.

The **Technical Briefing** will be held on **Tuesday July 24** at the Holiday Inn Esplanade Darwin Ballroom for Sail Indonesia and the follow-on destinations in Singapore, Malaysia and Thailand. This Briefing will provide formal instructions regarding the start procedures, radio schedules and your arrival in Indonesia as well as a range of other useful information.

Presentations will also be given by representatives from Indonesia, Singapore and Malaysia and will be followed by a question and answer session. This briefing is **compulsory**, the skipper and one other member of the crew must attend.

Australian Customs Clearance out will be for all yachts at The Darwin Sailing Club Training Room on July 27 (the day before the start) beginning at 9 am.

ENTRY INFORMATION

Entry Fee

The entry fee for Sail Indonesia 2012 will be \$525 AUD and included in your entry fee is:

- 1 The cost of your Indonesian Cruising Permit (CAIT) and your Sponsor Letter to enable you to apply or your Indonesian Social Visas in Darwin,
- 2 The Barbeque Dinner and Drinks in Darwin on July 16 for all crewmembers,
- 3 The Rally presentation and dinner in your first Indonesian port with entertainment and cultural shows,
- 4 The processing of all documentation for Indonesian Customs.
- 5 Participation in the events that follow throughout Indonesia
- 6 Automatic entry to Sail Morotai.

Not included in your entry fee are the following,

- 1 Your Indonesian Visas or Visa extension fees
- 2 Inwards port clearance fees when you arrive in Indonesia (approximately Rp200,000) or \$20 USD,
- 3 Any dinghy fees on the beach in the ports you will visit.
- 4 Port Clearance fees and charges if any (for example if your yacht is over 18 tons),
- 5 Marina costs,
- 6 Additional Tours or Transport Connections.
- 7 Any charges and costs when you enter or leave Indonesia.
- 8 Entry into the Sail Malaysia event as this is a completely separate event and there will be an additional cost.

Rally Entry Procedure

An Entry Form is not available directly from our website. As many of our intending participants have different languages, requirements and questions, we send out Entry Forms individually. Entry Forms will be emailed out beginning in late in the last week of February 2012 in groups of 20 in the order in which the initial expressions of interest were received, so that we (and our email inbox) do not become overloaded. One week will be allowed for intending participants to confirm their intent to enter the event, prior to the next group of entry forms being sent to other intending participants.

Entry forms will be emailed to you to the address provided in your expression of interest. Entries, including all attachments and confirmation of payment, will need to be emailed to us at mail@sailindonesia.net

The **closing date for entries** will be June 23 2012. As your completed entries come in to us we will confirm your entry to you by return email that your entry has been received and you will be listed on the Sail Indonesia web site on page <http://www.sailindonesia.net/news/entries.php> Please allow 2-3 days after sending your entry to us before your yacht is added to our list of entrants.

Rally Entry Documents

When you send your Entry Form back to us you will need to include the following items to allow us to apply for your Indonesian Cruising Permit known as a **CAIT** and prepare your Sponsor Letter so you may apply for your Social Visa. Your CAIT will be valid for 3 months from August 1st.

1. A Scan of your yacht's Registration Certificate.
2. A Scan of the details page of all crew passports. Please note that it is an Indonesian Immigration requirement that all passports must have at least 6 months validity from your proposed entry date into Indonesia; also, please note that some nationalities are not permitted to enter Indonesia.
3. A Scan of a Passport style photo of the **Captain Only**. All these scans should be in colour and scanned at least at 100 DPI and in JPG format. You can you send us a digital photograph; please make it with a plain light coloured plain background.
4. A crew list of every person on the yacht with their next of kin details.
5. Your planned itinerary of the places you plan to visit in Indonesia. If you wish we will provide you an itinerary that follows the rally route that will also enable you to visit any port in Indonesia through to Batam just south of Singapore. We will also need to know your next port after you clear out from Indonesia.
6. A digital photograph of the yacht, with yacht name clearly visible.
7. The \$525 Entry Fee, payable by direct bank transfer

We understand the limitations of onboard email systems, so when you email us please let us know if you are using

email with download limitations. We answer all emails within one day and if you do not receive a reply please resend your email. If you do send us an email, please make sure that we are on your "White List" so we can reply to you and always be sure that all emails to us have the name of your yacht as the subject line.

BEFORE YOU LEAVE DARWIN

Australian Customs in Darwin

To assist with your departure Sail Indonesia will give Australian Customs in Darwin a list of all participating yachts and crew details after entries close. **At least two weeks before** your departure from Darwin, every skipper should go to Customs House at 21 Lindsay St in Darwin. You will need to give them a crew list, copy of all passports and the ship's registration papers. If the skipper is not the owner, a letter of authorisation from the owner will be required. Customs will then give the skipper the forms if you wish to take on fuel and then claim the duty back. You can then make your own arrangements to purchase duty free fuel and duty free goods. Information and duty free order forms will be given to you when you meet with Sail Indonesia team members when you arrive in Darwin.

Arrangements for Customs clearance out of Australia will be confirmed at the Technical Briefing on Tuesday July 24 and Customs clearance of all yachts will be done at the Darwin Sailing Club Function Room on Friday 27 July beginning at 9 am.

DOCUMENTS AND VISAS.

You will need the following before you leave Darwin:

- 1. CAIT (Cruising Authority Indonesian Territory)**, this is the 3-month cruising permit for your yacht. The Sail Indonesia organisers obtain your CAIT for you. CAITs are valid for a 3-month period only, and CAITs for the 2012 Sail Indonesia fleet will expire at the end of the last week of October. If you wish re-enter Indonesia on your yacht or extend your visit in Indonesia, you must apply for a new CAIT. Please note that can take anywhere between 4 and 6 weeks for a CAIT to be processed in Jakarta.
- 2. Your Indonesian Social Visa** To give yourself the best flexibility it is best to arrange your Indonesian Social Visas from the Indonesian Consulate in Darwin before you leave and this will cost you \$60 AUD per person. This "Social Visa" is for a period of up to 6 months; however it is only enabled for 60 days when you first arrive in Indonesia and must be extended for additional 60 day periods at a time, at least 5 days prior to the expiration of the previous period. There are local charges for this of around \$50 US per extension.
- 2. WARNING**, to extend your Social Visa for a second time is a time consuming, expensive and complicated process which will require that you get an Indonesian Sponsor and be photographed and fingerprinted at an immigration office – in most cases you will not need to do this as your the first visa extension of 60 days will coincide with the expiry date of your CAIT late in October. In brief plan to be leaving Indonesia after 120 days at the end of your first visa extension.

A list of all persons included on your CAIT will be given to the Indonesian Consulate in Darwin so you will be able to go directly to the Consulate and apply for your Social Visas, for their web site see <http://www.kemlu.go.id/darwin/Pages/default.aspx?l=en>

The Indonesian Social Visa application forms are able to be downloaded from the Darwin Indonesian Consulate website at <http://www.kemlu.go.id/darwin/Documents/General%20Visa%20Form.pdf> and please note Social Visas take a minimum of **four** working days to process.

If you intend to stay in Indonesia for less than 30 days you may be eligible to obtain a "Visa on Arrival". In Kupang a 30-day "Visa on Arrival" will cost US\$25. Note: The "Visa on Arrival" is not extendible and if you overstay the 30-day period you will have to pay a US\$25 per day fine when you exit Indonesia.

If you plan to apply for a Visa on Arrival in Indonesia, check that you are in fact eligible. Some nationalities cannot be given a Visa on Arrival and MUST have Social Visa and some nationalities are not permitted to enter Indonesia at all. For further information visit the Indonesian Embassy's website: <http://www.kbri-canberra.org.au/consular.html>.

If your nationality is not listed as eligible for "Visa Free Entry" or for "Visa on Arrival" or you wish to stay in Indonesia longer than 30 days then you must purchase a "Social Visa" at a cost of \$60 AUD from the Indonesian Consulate in Darwin **before** you leave. The Social Visa takes four working days to process.

If you are not sure if some crewmembers will be able to join the yacht during your time in Indonesia or additional crew members may plan to fly in and join your yacht then leave while you are still in Indonesia please include their passport scans with your entry. Don't forget to make sure that crew joining your yacht can obtain the correct visa for their stay with you. If you have crewmembers listed on your CAIT who are not on your yacht at all times it will not be a problem.

If you wish to add any "last minute" crew in Darwin who are not listed on your CAIT who wish to apply for a Social Visa you will need a Sponsor Letter from the Sail Indonesia Organisers in Darwin and there will be a \$30 fee for this. You will also need to provide a photocopy of the crew's passport and a letter from the Skipper certifying the person is joining the yacht. As your CAIT takes 5 weeks to prepare in Jakarta and will already be in process late additions to your crew will NOT be listed on your CAIT and you may leave yourself open to the demands of Port and Immigration staff as you cross Indonesia.

If you have crew, who are planning to arrive by air to join your yacht the skipper should give them a letter saying that they are joining the yacht in Indonesia. It is best if they ask for a Visa on Arrival at their point of entry and not mention they are joining a yacht unless asked then produce the letter. If for some reason a yacht crew leaves Indonesia and re-enters to join the yacht, again it is best ask for a Visa on Arrival at their point of entry and not mention they are joining a yacht. In either situation, leaving the country with a crewmember on a yacht is usually not a problem as long as their Visa are in order.

Links to government websites regarding visas and immigration requirements for Indonesia Singapore, Malaysia and Thailand are at <http://www.sailindonesia.net/links/asianlinks.php> Presentations from representatives from Indonesia, Singapore and Malaysia at the Technical Briefing on Tuesday July 24th and will be followed by a question and answer session.

Health and Vaccinations

In Indonesia Typhoid, Hepatitis, Tetanus and Malaria are common. There has been a rise in the incidence of Malaria across Indonesia in recent months and, in 2005 there was an outbreak of Polio in Java as well as areas of swine and bird flu in Java and Bali. Every crewmember should consult a doctor for detailed advice on the prevention and treatment of tropical diseases. Make sure you have all special medical prescriptions filled before you leave, as the same type of drug may not be readily available in Indonesia. A detailed overview of health considerations for travellers in Indonesia can be found at the following website,

<http://www.mdtravelhealth.com/destinations/asia/indonesia.html>

The Travellers Medical and Vaccination Centre is located at the first floor of the Cavenagh Centre, 43 Cavenagh Street in Darwin; phone + 61 8 89817492. They specialise in tropical medicine and vaccinations. There is usually a few days wait for an appointment. Yachts with medically qualified people on board are asked to make their qualifications known to Sail Indonesia Organisers.

Radio Frequencies and Schedule

HF Radio and VHF protocols and schedules will be confirmed at the Technical Briefing. A formal HF radio net will operate for the duration of the Rally between Darwin and your first port in Indonesia and may continue informally thereafter. The HF Race Communication Frequencies are Primary 4483 KHz or Secondary 2524 KHz. Yachts willing to act as radio relay or support vessels for this sched please advise the Sail Indonesia Organisers.

VHF Channel 77 is the channel used by Sail Indonesia for local nets in both Darwin and Indonesia. All nets will take place daily at 0810 hours local time. The Darwin information net will commence on Friday June 29; the Indonesian net will commence when yachts arrive at the destination.

Radio Nets

We do encourage regular radio nets and email groups to get going after you are in Indonesia, we will be looking for some yachts that will be interested in doing this and this information will be sent out with your entry form. Our Privacy Policy means we do not give out any of your details to other parties so we will ask if you have or would like to create an email address that can be given to others just for the purposes of inter-yacht communications. Final arrangements for this net will be made in Darwin before you leave.

Darwin Tidal Information and Indonesian Charts

The tidal range in Darwin is 8 meters and links to download tide charts for Darwin are on our website at <http://www.sailindonesia.net/links/weather.php>. Original and copies of charts for Indonesian waters can be obtained in Darwin. Charts usually are **not** available in Kupang or Ambon but there are shops that will photocopy full size charts.

Travel Warnings

It is most important that you check the latest information on travel advice and the security situation for the countries and places you propose to visit. This information is available from a number of Government Websites including <http://www.smarttraveller.gov.au> and from most other embassies in Australia.

Dont Forget

You should take; **a 3 month supply of Cooking Gas** as Indonesian government regulations do not permit gas bottles with non-Indonesian connections to be refilled in Indonesia any **Yacht Spare Parts**, especially fuel filters and **Your Prescription Medicines** as the quality of medications in Indonesia is not always guaranteed.

ARRIVING AND SAILING IN INDONESIA

Indonesian waters offer spectacular sights and experiences but sailing close to the shore at night is not recommended unless absolutely necessary. Indonesia is an island nation with thousands of trading and fishing boats of varying types and sizes; at night, many of these boats will not show any lights at all or worse, show navigation lights that may be reversed, confusing or simply wrong. Take care as close to ports the sea is often very polluted with plastic bags and other rubbish (trash) which can block your water intakes and in some cases it the past has wrapped around the propeller. In one instance in 2011 one yacht had a blocked cooling water intake AND a fouled propeller at the same time.

Additionally there are many types of unlit fishing platforms and traps in both coastal and deepwater areas. Also the number of pearl farms in Indonesia is increasing; it is now usual for these farms to be patrolled by boats with armed guards.

Never rely on any shore based or port navigation lights operating correctly in Indonesia. Note that around most harbours there are many fish traps (large and small) and people out on small-unlit canoes at night. Some have lights but some do not. Some fish traps (Began) are large floating bamboo structures, often with accommodation on top and can measure approximately 10 x 10 metres. All these craft are particularly difficult to see at night, and often there is not even a mast or sail to alert you to their presence. Radar is not always able to detect these craft and it is always advisable to be alert and vigilant. Always have a person on the bow with a spotlight to check for clear water ahead close to the shore and of course keep your speed down.

Your Arrival in Kupang or Saumlaki

Kupang and Saumlaki are very busy ports with a large number of ship movements around the clock. At night extra care is needed as the local shipping navigation lights may be incorrect, partially operational or not working at all. The anchorage area details in your first port of arrival will be supplied at the Technical Briefing.

As you approach the finish area contact the Kupang Rally Office on VHF Channel 77 to announce your arrival to the onshore radio to obtain any last minute information or instructions. Again take great care in the waters close to shore as this area has not been officially surveyed and at night there a large number of unlit canoes and fish traps that are difficult to see often cannot be seen using radar.

After you have crossed the finish line, anchor in the CIQ (Customs Immigration and Quarantine) area where entry formalities will be completed. Yachts arriving during the night will not be cleared until the following morning. The Local Rally Office radio will be open from 0700 – 1630 hours.

Arrival Documentation you will need when you arrive in your first port

Shipping documentation in Indonesia is a mass of paperwork dating from the nineteenth century, make many copies of the following documents as they are required on arrival in Kupang or Saumlaki and some following ports for Indonesian Customs and Immigration clearances.

- 1 Copies of your Cruising Authority Indonesian Territory (CAIT)
- 2 Copies of passports of all those travelling on the boat **including the page with the Indonesian Visa.**
- 3 A copy of your Ship's Registration Papers
- 4 A copy of your Crew List, this is simply a list of all the crew with their passport details.
- 5 **DO NOT FORGET** to keep your Australian Customs outgoing port clearance papers from Darwin, as a copy of it must be given to the Customs when you arrive in Indonesia and without it you cannot complete your incoming clearance.

KEEP ALL YOUR ORIGINAL DOCUMENTS and do not give away any original documents, as copies of some of these documents will be required at intermediate ports of call again and again. Copies of these documents will be also be required when you finally clear out of Indonesia.

The Anchorage

On arrival anchor in the designated CIQ mooring area and advise the Rally Office of your arrival on VHF Channel 77. If you arrive during the night, make contact with the Rally Office after it commences at 0700 hours the following morning. The CIQ mooring area will be very busy and to make sure that Indonesian CIQ can identify the yachts that have not been cleared, it is best to have a LARGE "Q" flag. Remember also, the Indonesian national flag must be displayed and this red and white flag is flown with red uppermost.

Arrival Customs, Immigration and Quarantine (CIQ)

*Arrival clearance generally takes place on board the yachts. **You cannot go ashore until you are cleared.***

Officials boarding your yacht will include Customs, Immigration and Quarantine Officials. Your yacht will be inspected and your paperwork will be collected at this time. It is a good idea to safely stow duty free goods and any valuables out of sight. Please don't offer the officials any alcohol or gifts. Foreign yachts are a cause of great curiosity, so be patient but firm as your vessel is your home. *It is not necessary to give the officials that come on board your yacht any "presents" and it is best not to invite them to have an alcoholic drink as this will slow down the processing of incoming yachts behind you.*

At your first port copies of your paperwork as well as all crew passports and completed Arrival Cards will be taken ashore for processing. Make sure you write down the name of the Customs official who has taken your passports and papers for future reference in case you should you need it. At this stage you are cleared to come ashore in Indonesia. **Before** coming ashore.

Please advise the Rally Office on VHF Channel 77 that you have received clearance, Take down your "Q" flag and Re-anchor in the general mooring area (as per the instructions supplied at the technical briefing).

Welcome ceremonies will most likely commence on Thursday 2 August July.

Dinghy Service

The local community plan to form a co-operative to care for your dinghy while it is on the beach in front of the mooring area in Kupang. There will be a charge of around Rp20,000 per day for this service which is around US\$2. The dinghy boys will keep inquisitive locals away, help you carry the dinghy to and from the water and also help you with any baggage you may have or garbage you bring ashore, all this for \$2 per 24 hour period.

Rally Office

The Rally Office in Kupang will be located on the foreshore near the mooring area between 0700 and 1630 daily. As soon as you come ashore, please contact with the office for any messages and latest information. The Rally Office will also be on VHF Channel 77, the official Rally channel during office hours, and a net will be run daily at 0810 hours local time.

Guns Guns Guns Guns Guns Guns Guns Guns Guns Guns Guns Guns Guns Guns

Indonesian regulations regarding firearms and ammunition are very restrictive and rigidly enforced. The penalty for possession of unregistered or illegal firearms can be as high as **15 years in prison**. Your firearms **MUST** have Certificates of Registration from the country of origin and the clearance papers from your last port (in this case, Darwin). Proof of purchase or store receipts are not acceptable. On arrival in Indonesia you must declare, and provide an inventory of, all firearms and ammunition to Indonesian Customs.

In Bali in 2004, a foreign boat captain spent four months in a Bali jail for not declaring his shotguns and ammunition. In Kupang in 2005, a Sail Indonesia Rally skipper declared his shotguns with the receipt from the store in the US where they were purchased. In accordance with US laws the weapon did not need to be registered, however his gun was confiscated; he was also threatened with court proceedings and a possible 15-year jail term. It took significant negotiations and the intervention of his country's diplomatic mission to resolve the issue.

DURING YOUR STAY IN INDONESIA

Bahasa Indonesia

English is not often spoken away from the main centres. The Indonesian language, Bahasa Indonesia is not a difficult language, so before you leave Darwin you should get yourself a phrase book and at least arrive with a few words - and remember, if in doubt, smile. Most of the children have a little English from school. Learning some essential phrases and/or a phrase book/dictionary is useful. The people that do speak some English often like to practice it and are delighted if you speak a little Indonesian.

An Indonesian travel guide such as the Lonely Planet will be very useful and again this should be purchased before you leave Darwin. Also, review the "STORIES" page of our website to read accounts and experiences of people who have joined with Sail Indonesia in previous years.

LPG Gas Bottles

Indonesian government regulations do not permit gas bottles with non-Indonesian connections to be refilled in Indonesia so you should take 3-month supply of gas with you. If you wish, you can have your gas system connections modified while you are in Indonesia to connect Indonesian bottles. Some agents can arrange for your gas bottles to be filled but this is not publicly announced but by word of mouth so you may be lucky.

Weather

The predominant weather system in the region during the rally period is the southeasterly trade winds ranging up to 25 knots. In the Indonesian chain of islands, northerly afternoon sea breezes can also be expected. Weather links for Australia, Indonesia, Singapore, Malaysia and Thailand can be found at <http://www.sailindonesia.net/links/weather.php>

Most importantly during 2010 and 2011 most yachts reported little or no wind for days at a time so always carry enough diesel fuel. One of the skippers said on some days the event could be renamed "Motor Indonesia"

Currency

You should obtain some Indonesian Rupiah before you leave Darwin so that you have local currency as soon as you come ashore. Both Australian and US dollars are easily exchanged in Indonesia but in 2011 some yachts had Euro banknotes and they not able to exchange these for Rupiah.

Note: foreign banknotes must be in good condition, as torn or notes with writing on them notes will not be accepted by the banks or moneychangers. **Most importantly** take some Indonesian currency with you from Darwin and carry a reserve of Rupiah as occasionally the Cash Points can run out of money, stop working for a day or two and in some places do not work with all cards so you may be a little while without access to money.

If you intend using Cash Points to get money in Indonesia, make sure that you advise you bank of your intended travel in the country, as some cards/accounts require prior notification of international use. Please note that in Indonesia you will be limited to a single withdrawal of Rp1,500,000 per transaction at Cash Points and a maximum of two each business day and each transaction has a fee of \$8-10.

How you can help

You are going to meet some very poor people in Indonesia who will offer you enormous hospitality and generosity. Before you leave Darwin we suggest go to a second hand shop and buy a bag of children's clothes that you can give

away when you get the opportunity, also exercise books, writing pads, pens, and pencils are also highly valued gifts for school children, so be sure to take a range of appropriate 'give away' supplies with you. Sail Indonesia is now supporting young students to undertake a course of study at the University of Kupang and if you wish you can make an optional donation of AUD\$25 to the **Sail Indonesia Kupang University Scholarship** fund. Further information on this scholarship can be seen on our website at: <http://www.sailindonesia.net/indonesia/scholarship.php>

Dress in Indonesia

Dress standards mean a lot in Indonesia, always wear smart casual clothes especially when dealing with officials and it is best not to wear expensive jewelry when you are out and about. Remember Indonesia is the world's largest Muslim country and as such women in particular, should always dress modestly.

Duty Free Alcohol in Indonesia

Most yachts will have duty free alcohol on board and Indonesian laws regarding taking it ashore from your yacht are no different to most other countries in the world. If you take any ashore for your own consumption, be discreet as the fines from the local authorities can be very high. For those of you who drink beer the cost of a large bottle of beer (Bintang) in Indonesia is Rp12,000-25,000, which is less than \$3:00 AUD.

"Different Field, Different Grasshopper"

Things are different here. This saying was "discovered" in Flores by Belle Holahan sailing on the catamaran Simpatica while shopping in Flores and it best describes your upcoming Indonesian experience.

Things are never the same, procedures in government offices may change from day to day and most certainly from one place to the next.

Getting things done in Indonesia is quite often a bureaucratic nightmare with are no clear regulations or rules of engagement requiring many photocopies of all your documents combined with you sometimes having to make 'facilitation' payments to ease the way when obtaining goods or services. Additionally, the Western concept of time is not familiar to the population of Indonesia; the wonderful phrase "Jam Karet" delivered with a smile (translated as "rubber time"), will explain why the parts you are waiting for or the taxi you have ordered is late or does not arrive all. These two things alone mean that Indonesia is a very different kind of place and sometimes getting the simplest task done such as taking on fuel or water can take all day.

These frustrations will be more than compensated for by the generosity and total friendliness of the people of Indonesia combined with the amazing array of sights, scenes and culture you will experience throughout your journey through Indonesia; again read the STORIES page of our web site.

Yacht Spares and Importing Yacht Parts into Indonesia

Obtaining spare parts for western yachts in Indonesia is almost impossible. Engine spares may be available but they will be difficult to locate away from the main centres. The best thing is to take any spares you may need with you, especially fuel filters.

Importing yacht spare parts into Indonesia is a complicated and difficult process as the Indonesian Customs procedures are very bureaucratic for yachts in transit. In any case, these importation services are only easily available in ports of entry and exit such as Kupang, Bali, Surabaya, Batam and Jakarta.

Note for parts that are to be received in Bali do not use FEDEX as they do not have a full office in Bali.

Most important, according to Customs Regulations, parts for yachts are regarded as luxury items subject to a 45 percent import duty. To avoid having to pay import duty on items you are expecting, (even though you will be taking them with when you leave Indonesia) you will need to go to the **Fedex** or **DHL** office with your paperwork to make import arrangements **BEFORE** the items arrive in the country. If you do not do this, you will have to pay the full Indonesian import duty of 45 percent and there is no way around this.

Sail Indonesia Program of Events in Kupang, Saumlaki and through Indonesia

A four day itinerary for your entertainment will be provided on your arrival by the Sail Indonesia Local Committee. This will include a Welcome Ceremony, Tours, Cultural Presentations and some free time for doing your own sight seeing. The draft schedule is at the back of this document and final details will be finalised at the Technical Briefing in Darwin, posted on the website and updated daily on the Notice Board in your port of arrival.

Local Information Desk and Guides

A local information desk in Kupang will be provided by the local organising committee can provide information about getting around. There may also be a number of official guides who can assist you during your stay. These young people are generally students at the local university who wish to practise and improve their English language skills. They will provide valuable assistance to you and can accompany you to the markets, bank and shopping etc. No formal payment is required but if you wish, you can give a tip or gift to the guides that help you as well as pay for any food and refreshments.

Shopping

In all towns there are a number of open air fresh food markets with a large array of very fresh fruit and vegetables at cheap prices. Go early!!! There is also a fresh fish and meat market. Be warned – it is not for the faint-hearted as you never know what you might find trussed up and offered for sale and the smell of fish and meat can be quite

overpowering for the Western senses as there is no refrigeration. It is helpful to have command of basic Bahasa Indonesia (particularly numbers) if you are going planning to shop at these fresh food markets.

Transport

In Kupang and all large towns and cities the most effective means of transport are the local buses, small mini vans called 'bemos', Banda is so small that walking is the best way to get around.

Electricity

The electrical power supply in Indonesia is 220 volts at 50 Hertz

Internet Facilities

Internet facilities in Indonesia are often very slow and not very reliable in the Internet cafes (Warnet) offering access, some cafes provide WIFI hotspots and technology is gradually improving and now wireless internet modems are available for you to connect to the internet.

Communications

The GSM phone system is in use in Indonesia and you can use your own mobile phone. If you wish, it is a simple and cheaper option to purchase a local SIM card from one of the many phone shops. This is the best way to keep in touch with other yachts and their crews, the rally organizers and the support crews. As with most things in Indonesia, the service is not always 100 percent reliable. Often the phone service is unavailable for hours at a time. The SMS service is very cheap. Note: prepaid phones purchased in Australia may not work in Indonesia. To call Indonesia from outside the country, the code is +62. Another cheap option is to go to one of many Wartel shops where you can make international calls from a booth and simply pay at the completion of the timed call.

Water

Water is available in most ports but as with all water taken on in Indonesia you should not drink it unless it is boiled or treated. A large selection of processed bottled water is available everywhere in Indonesia and if you wish you can buy drinking water quite cheaply in 20 liter returnable bottles.

Food and Provisioning in Indonesia

For those who like western delicatessen items such as processed meats, cheeses, crackers olives, wine and so on, these items are not available in the areas you will be going until you get to Bali or Singapore so you should stock up on these items before you leave Darwin.

Diesel Fuel in Indonesia

Diesel fuel (*solar*) costs around Rp 6,500 per litre in Indonesia and it is readily available at almost every place you will visit. Petrol (*bensin*) is also readily available. However, it is best to fuel up at larger ports you will be visiting, as the smaller villages may not have sufficient stocks to sell to you. While the cleanliness of fuel in Indonesia has improved in recent years, you should always filter all fuel going into your tanks.

In the past diesel fuel was usually transported to the yacht in jerry cans. In Bali, since the nightclub bombings, it is now illegal to carry fuel in jerry cans (jerry jugs) unless the seller has a special permit. This is also the case in other parts of Indonesia usually enforced by dockside fuel vendors who can take advantage of this situation and increase their price above the general rate. Also be warned local traders may attempt to ask for a higher price stating the lower price is for Indonesians only as the fuel in the country is subsidized by the government. Do not hesitate to walk away and deal with another agent, again the "*Different Field Different Grasshopper*" rule may apply.

You will be able to take on fuel in Kupang and Saumlaki, organised through local businessmen. The fuel will be bought to you on a small boat and your tanks will be filled by hand. There will be a slightly higher price for this 'door to door' service, but it is worth it. It all sounds complicated and it is. In Kupang in 2011 there was a dispute between the fuel suppliers and the resellers with the result that there was no fuel for 2 days, it required the "involvement" of the local police to resolve the problems and how each party was to be paid and after that fuel began to flow freely. This type of thing happens frequently and is part of the journey

Medical Services

Medical services away from the main urban centres vary from limited to non-existent. If you do need medical services, SOS International in Bali and Jakarta offer a first rate service. In Indonesia, medical supplies are very reasonably priced and are available at most "*Apotik*" (chemist) stores, even general prescription drugs but take care as they may not have been stored correctly or may not be what is stated on the label. The very popular stomach upset "*Bali Belly*" may not be in fact a bug but rather the result of different food or too just much fun. A very effective remedy you may wish to try first are activated charcoal pills called "*Norit*", easily obtained from any Apotik store.

Bargaining

Bargaining is the system of commerce in the smaller local markets away from the large stores and supermarkets and usually around 60 per cent of the original asking price is about what you could expect to pay, but again as with all things in Indonesia there are many "*Different Types of Grasshopper*".

Ceremonies

For all religious groups these ceremonies are very important and are taken very seriously. Always be respectful and comply with local customs. They will sometimes invite you to participate in various aspects of the ceremonies, particularly singing and dancing. In the less formal ceremonies anyone able to play an instrument will be warmly

welcomed to join in, you will be amazed by the different dances and music of the regions.

YOUR ROUTE THROUGH INDONESIA

Your Program in Indonesia

The scheduled events after your first port through Indonesia are arranged by DKP and are not designed to be followed in sequence as part of a route. The members of DKP are not sailors and these stopovers have been arranged by the officials from the individual islands often without the sailing time between events being taken into consideration but that is all part of the charm of the country.

You are not expected to attend every scheduled, after your first port in Indonesia if you wish you can make your own way across the country and just choose the events that suit your own schedule.

Details of the full program will be put on our website as they are confirmed, and members of the committee will be at the Technical Briefing in Darwin to answer any questions you may have. This team will be at every rally port of call to assist with liaison with the local organisers and provide information to yachts.

The Preliminary Schedule of Events is shown at the back of this document and will be updated on the website and at the Technical Briefing in Darwin before you leave.

Contact with the West

Many of the more remote islands and villages you will be visiting in Indonesia have not had a lot of contact with contemporary western culture through tourism. It is best if all visitors are mindful of this fact and, therefore, be respectful of the local culture and customs. Please note that that alcohol is not widely drunk in Indonesia.

Security and Theft from Yachts

Firstly don't leave temptation on deck. In 2004, two rally yachts were broken into and robbed while unattended at anchor off the town of Labuan Bajo on the western end of Flores and the local police were not very interested. In 2008 a yacht reported that while they were anchored off a village their Genoa sheets were cut from the sail and stolen. It is always advisable to exercise care and vigilance when near villages, in any port and especially when you have people on board for Customs clearance or refueling. It is always best to practice neighbourhood watch and not to leave your yacht unguarded at any time unless in a marina.

Arrival in Bali

Do not attempt to enter Bali Harbour at night. Many yachts have been lost on the reef outside the harbour entrance. The channel is very narrow with unreliable and dim navigation lights set against a bright background; often some of these navigation lights may be not working at all. The port is officially closed at sundown, so entry at night may void your yacht insurance. When you arrive off the entrance to Benoa, call the Bali Marina on VHF Channel 77 to let them know of your arrival and to receive any last minute instructions. Calls are not always answered promptly so it is best to begin calling when you are 2 hours away from the port entrance.

Entering the Port of Benoa in Bali

The Benoa Harbour leads begin at the Sea Buoy at 8°45'14 S, 115°14'55 E. Note that there are very strong tidal currents and overfalls in the area of the entrance. Follow the leads (just below a lone palm tree on the hill above) on a course of 255° True, past Buoys Number 1 and Number 2 to the beginning of the dogleg channel. Maintain a course close to the Red (left) side channel markers keeping well clear of all green markers. Continue 30 metres past the last Buoy #8 before turning North staying close to the main ship wharf and then on to the Marina, located at 8°44'28" and 115°12'48" Bali is able to cater to any requirements of the tourist, just ask the staff in the Marina office for any assistance with tours, transport or shopping.

The long established Bali Yacht Services (contactable on VHF Channel 11) offers a wide range of services to visiting yachts.

Visa Extensions in Indonesia

"Processing visas for foreigners means navigating one's way through a maze of bureaucracy in which there are few clear rules of engagement. The pitfalls usually involve corrupt officials manipulating overlapping regulations to their benefit, with a mass of paperwork and meaningless technicalities slowing down what should be a relatively straightforward process."

The description above was written in *The Jakarta Post* in May of 2006 and describes the Visa renewal process fairly accurately. In the past some people have written back to us with complaints about their experiences when extending their visas but this process is done by local government authorities and officials and as such it is beyond our control.

If you have a **"Social Visa"** it is extendible for a total period of up to 6 months; however it is validated for only 60 days (NOT 2 months) when you first arrive in Indonesia. At least 5 days prior to the expiration of this initial period you must have it extended. You will need to find a Local Agent to do this for you and there are charges of around Rp500,000 per passport for the agent to provide each passport holder with a **Sponsor Letter** and to arrange the extension of your visa at an Immigration office.

You may not be able to extend your visa at the Immigration Office yourself, as you will need the sponsor letter, but as they say “**Different Field Different Grasshopper**”. This simple procedure may be the most the most complex and frustrating thing you do in Indonesia made so only by the action of local immigration officials

Again - WARNING, to extend your Social Visa for a second time is a time consuming, expensive and complicated process which will require that you get an Indonesian Sponsor and be photographed and fingerprinted at an immigration office – in most cases you will not need to do this as your the first visa extension of 60 days will coincide with the expiry date of your CAIT late in October. In brief plan to be leaving Indonesia at the end of your first visa extension.

Indonesian Visa extensions in Bali

Visas will be able to be extended at the stopover in Bali. At this time we are working with the Bali Marina management to extend visas for crewmembers with Rally Cruising Permits at around \$50 per passport and full details will be available at the Technical Meeting before you leave from Darwin. Wayan Kotha from Bali Yacht Services can also arrange the extensions for around \$100 US for each passport. Sail Indonesia will advise participants of recommended visa extension arrangements.

Again, remember if you intend to go to Indonesia and stay in Indonesia for longer than 30 days you must purchase a "Social Visa" in Darwin prior to departure for each crewmember.

Clearing out of Indonesia

The clearance port(s) and final clearing out arrangements from Indonesia will be advised at the Technical Briefing in Darwin. As you clear out from Indonesia, please send an email to Sail Indonesia at mail@sailindonesia.net confirming the date and your port of departure.

BEYOND INDONESIA

A range of events and functions are being organised for the Sail Indonesia fleet in Singapore and Malaysia. These will be detailed on the website and at the Technical Briefing. For information about visas for Singapore, Malaysia and Thailand, all participants should check with the Diplomatic Missions from these countries to check your own visa requirements. Go to <http://www.sailindonesia.net/links/asianlinks.php> for further information.

GUNS GUNS GUNS

As in Indonesia Singaporean and Malaysian regulations, regarding firearms and ammunition are very restrictive and rigidly enforced. All countries apply severe penalties for unauthorised possession of ammunition, unregistered or illegal firearms. You **MUST** check with the diplomatic missions of the countries you intend to visit to check regarding their regulations regarding firearms.

DRUGS

The penalties in Indonesia, Singapore, Malaysia and Thailand for the possession or trafficking in drugs are extremely severe and in some cases will attract the death penalty.

Sail Indonesia Privacy Policy

When you enter our rally you will be asked to send us personal information. This information is only used for the management of the Sail Indonesia Rally and is kept in secure conditions and all precautions are taken to protect and secure this data.

Any emails and personal information sent to us are not stored on line as in a Hotmail or Gmail email account where it is possible to be hacked and accessed by others. All emails and information sent to us are downloaded from our mail server on a daily schedule and then stored on computers that are not connected to the Internet. We do not send broadcast emails and we do not keep mailing lists.

Details of your yacht, email address, contact phone numbers, your crew and their passport information will be given to the Australian Customs Service to assist with your outgoing clearance and departure from Darwin.

The Jakarta CAIT office where your Indonesian Cruising Permit application is processed receives low definition scanned images of your yacht's registration certificate and every crewmember's passport, as these must be included with your CAIT application.

We **DO NOT** give any of your personal details to other individuals or organizations; the only exception is that your Yacht Name, Nationality, Yacht Design and the Skipper's Name are published on the List of Entries page of our web site. Our web site contains links to many other web sites, we do not endorse these web sites, their content, their advertisers, or the privacy practices of these linked web sites.

FINALLY

This information document must not be used alone or relied on for information or navigational purposes. Regulations in Indonesia can change without warning and the information contained in this document is the most up to date and

the best we have based on all the information available to us.

Indonesia is a very different to any western country and no doubt there will be last minute small changes to the information in this document and any changes will be given to you in the Update Document when you arrive in Darwin and at the Technical Meeting.

Your visit to Indonesia is coordinated by DKP and the scheduled events after your first port through Indonesia may not all be suitable to be followed in sequence as part of your route. As in past years the events across Indonesia at the places you will visit are actually arranged by the local authorities. You are not expected to attend every scheduled event, after your first port in Indonesia if you wish you can make your own way across the country and just choose the events that suit your own schedule.

You may read in some blogs or websites that Sail Indonesia did not organise fuel deliveries or tour connections or that they were cancelled or rescheduled BUT these events and services are outside our control and if things do not go as planned for you, that is part of the charm of Indonesia.

In past years we have also received complaints that a small number of participants experienced some minor problems when dealing with some local government agencies and again we have no control over their procedures. We will always do our best to make sure these are minimized but you will need to follow the sometimes different regulations in each region or port and as these are under the control of each individual government organization.

Lastly as you move through Indonesia you will see often see "Sail Indonesia" mentioned in conjunction with tours, agents and other service providers using our name, this has grown over the years, however we ARE NOT associated in any way and do not endorse the services of any other business or organization in or outside Indonesia with the exception of Raffles Marina in Singapore and Sail Malaysia.

2012 PRELIMINARY SCHEDULE OF EVENTS

This Schedule is dated January 25 2012

The destinations across Indonesia for 2012 are now arranged but the schedules for some stopovers may change a little as final arrangements are made, our web page is always being updated as details including co-ordinates become available, always check with this page for the latest information and final details will be given to you before you leave from Darwin.

The 2012 Western Passage Route across Indonesia will be similar as in past years, to see what to expect please see the 2008 History Page for a summary of the event for that year. For 2012 there are two destinations and routes offered for you to in Indonesia as detailed on the map on our home page.

The first entry port will to be Kupang as in past years at 10° 09 and 123° 34' located 420 miles WNW from Darwin and from there you will be able to follow our traditional Western Passage Route.

The second entry port will be at Saumlaki at 07° 54' and 131° 22 ' located 270 miles north of Darwin.

There are no additional costs for these events through Indonesia however any port charges, additional tours, accommodation and transfers will be at your own expense. You are not expected to join all the Sail Indonesia scheduled events, there will simply not be enough time for you to participate in all our planned destinations and events. As you can see there same events scheduled at the same time so you will not be able to do both events.

After you complete Indonesian Customs and Immigration formalities at your first port in Indonesia if you wish you can then cruise westwards following your own route and simply join the events that suit your schedule.

2012 PROGRAM IN DARWIN

Friday July 20 Farewell Barbeque at the Darwin Sailing Club for all crewmembers.

Tuesday July 24 Rally Briefing and Information Day at The Darwin Holiday Inn Esplanade Hotel at 1 pm.

Saturday July 28 Sail Indonesia begins at 11 am in Darwin Harbor, all yachts for Saumlaki and Kupang will start together.

2012 WESTERN PASSAGE or KUPANG ROUTE

Kupang 10° 10' 123° 35' July 30 - August 2

This is one of the main cities in Eastern Indonesia located at the western end of Timor and is well known as the place where Captain Bligh finished his epic journey across the Pacific after the mutiny on the H.M.S. Bounty in June of 1789.

After Inbound Customs, Immigration, Quarantine and Port clearance you can enjoy the Welcoming Ceremony by Local Government, and the Bupati in addition there will be a Gala Dinner, Cultural Festival and Exhibition with local tours, woven blankets, arts and crafts exhibits. Fuel and Water orders will be delivered to each yacht. Free time to go on a tour or make your way to Alor.

Wini, North Timor 09° 10' 124° 28' August 3 - 6 Details to follow.....

Alor 8° 13' 124° 30' August 3 – 6

The town of Kalabahi is the main town on Alor has been a popular stopover in past years, this year there will be an art and cultural Expo Opening ceremony at the city Sports stadium presented by all islands of the region. This event will have up to 1000 participants with traditional costume, dance and song. Outing to Alor Besar by bus. Always a cultural treat with beach party with swimming and snorkelling. Gala Dinner then sail to Lembata.

Lembata 08° 22.2' 123° 24.5' August 16 – 19

Anchor at Lowobela Harbor at the foot of a smoking volcano, there will be a welcoming ceremony, opening of the Flores and Lembata Festival Cultural expo with traditional sports demonstrations as well as local arts and crafts. The anchorage in Lowoleba is just a beautiful and secure with a smoking volcano just in front of your anchorage and its only 1km to the city and the market.

Your visit to Lembata won't be complete without a visit to one of the last traditional whale hunting village of Lamalera, this village is located in the southern part of the island and access to the area has only recently been improved.

Larantuka 08° 20' 122° 50' August 21 – 22

Located on the Eastern end of Flores with beautiful views of the surrounding volcanoes. Details to follow.

Sikka 08° 36' 122° 10' 20 August 26 – 29

Maumere is the main city of the Sikka Regency, the anchorage at Waiara is in front of Oe Sao resort, the Tourism Office will guide participants to the traditional village of the original Kingdom of Sikka Regency demonstrating Ikat weaving and where you will have the opportunity to try traditional foods and additional festivities are also planned. The anchorage is around 22 kilometers from the town of Maumere. Maumere is the main port in Flores and during the time of Portuguese occupation was a large, there is still the remaining family of the last King and the history still can be seen by visiting the village of Sikka.

Ende 8° 30' 121° 47 September 1 – 4

Here the anchorage is off the native, serene untouched villages of Maurole and Mausembi on the central northern coast of Flores in the Ende Regency. The Famous Flores Lembata Festival (FLOBAMORA FESTIVAL) will be held in this village. Participants will also have the opportunity to see Local Wine Processing in Native Ritual and will be invited to the unique traditional village of Wolotopo and you may wish enjoy the hot spring waters along the way. Maurole in past years has been the best destination of the rally because of the welcome given by the people, good preparation and spread of interesting visits to the traditional villages. The Ende Regency has the most traditional villages in this, the Nusa Tenggara Timur Province where they still follow their old rituals. You will have a chance to visit some of the villages and the tour will be provided by the people of Maurole and the Local Government.

One thing that you also should not miss while you are in Maurole is a visit the world famous Three Colored Lakes at Kelimutu in old volcanic craters

Riung 08° 24' 121° 01' September 7 – 10

Riung is the area in the northern part of Ngada regency on Flores Island, the anchorage is located in front of the village name Nangamese and there is a concrete jetty available where you can tie up your dinghy. There are 21 inhabitant islands in the surrounding area and most of them are beautifully circled by white sandy beach and are good for snorkelling. The area of the anchorage is a conservation zone so please be careful when you are entering the anchorage. Riung has been a destination for Sail Indonesia some years and this year the new local government (Regent) has agreed to run the event for Sail Indonesia in his regency.

There are traditional markets and restaurant available in area, but please be advised that there are no ATM or money changers, so make sure you get some money while you are in Maumere. There are a number of interesting places in the area you can visit including The City of Bajawa, The Traditional Village of Bena (megalith village) and Wawomuda Crater, Hot water Springs of Mengeruda.

Labuan Bajo 08° 31' 119° 52' September 13 – 16

Acceptance Ceremony by the Labuan Bajo Regency, Labuan Bajo is the capital city of Manggarai Regency which is located on the western end of Flores, the anchorage at Pede Beach is well protected as it is inside the bay area and there are also many small inhabited islands around the bay.

The Komodo Dragon conservation area is located in Komodo Island and Rinca Island, you can visit the conservation area during the day time – a guide will assist you during your visit in the park. Labuan Bajo area is not only famous for the dragons but also for its underwater beauty, there are many spots where you can go diving in this area surrounding the small islands spreading beyond the bay. There will be free time to discover the town area and the surrounding areas.

Lombok 8° 21' 50 116° 07' 45 September 17 – 21

The venue will be the Lombok Medana Bay Marina development at 8° 21' 50, 116° 7' 45 on the north-west coast of Lombok and overlooks the three Gili isles to the west. The developed tourist area of Senggigi is 30 minutes drive away along the coastal road, Mataram airport 40 minutes via the inland road over the monkey forest hills and Bali is 45 only kilometres away across the strait. The Local Government and the local people will be involved in the event; a cultural performance and dinner will be hosted at the Marina. Lombok has a lot to see, a natural landscape up to the Rinjani Mountain, the capital city Mataram and some interesting historical sites such as Narmada Park and Sasak Village. Please see their website at www.medanabaymarina.com

Bali 08° 8' 115° 01' September 23 – 27

Bali as a world famous tourist destination really needs no introduction. Your arrival in Bali coincides with the time of the first extension of your Social Visa so if you need your Indonesian Social Visa extended this is the place to do it. Staff will be there to assist you with your Visa extension. The schedule of events for Bali is not final at this time but will include cultural shows and dances that Bali is world famous for as well as dinners and island tours. For more information please click Bali and Denpasar The International Airport is 20 minutes from Denpasar and there are many flights to all destinations every day.

Karimun Java 05° 52' 110° 26 October 2 – 4

This stopover consist of 27 small islands, among them there are 4 larger islands which are inhabited. The larger island of Karimun Jawa is side by side with Kamojan Island, the anchorage is the old harbor is very secure with good anchoring.

In Karimun Jawa you will find a peaceful climate, there is no transportation in the island, one small restaurant (Warung Ibu Esther) located close to the anchorage, the place is actually the gathering place for the sailors. For more luxury climate there are three resorts just about 25 minutes walk away.

Arrive Karimun Jawa city anchorage for reception, cultural dance and shows. Visit Kura Kura resort with an optional dive tour. You can take the ferry to Jepara which is a wood carving centre or sail to our anchorage and dinghy dock. Here an official reception by will be staged by the local government. Then, you can join the tour of central Java with a steam locomotive train ride to the Losari coffee plantation for high tea then continue onto Borobudur, one of the 8 wonders of the old world then on to Ramadan Temple with overnight accommodation arranged at the hotel. Return by bus or continue on your own to visit Yoga. There will be an additional cost for this tour and is planned for 4 days and 3 nights and your vessel will well guarded in front of Harbor Master office in Karimun Jawa.

Kalimantan 02° 45' 111° 40' October 1 – 5

The Kumai River is on the south coast of Kalimantan, here is the world famous facility where Orangutans that have been kept in captivity are reintroduced into the wild. Rally participants in past years have described their visit here as one of the highlights of their stay in Indonesia. Tours with Korindo should be arranged in advance and can be booked direct with them. To see details and great photographs of a previous trip up the Kumai river by the crew of Billabong in 2007 see the STORIES page of our website.

Belitung 02° 23' 107° 40' October 8 – 11

Belitung is the name of the regency in Belitung Island, for the past three years Belitung has been the Sail Indonesia farewell destination. Regional Tour of Belitung , Traditional Ceremony, Traditional Festivities and lot of fun sharing in the cultural display and additional festivities are also planned. In Belitung you can complete your Indonesian visa and yacht exit formalities or if you wish you can sail on to Bintan or Batam and do it there.

Bintan 01° 04' 104° 30 Stopover

Bintan is one hour away from Singapore by high speed catamaran, here you can check out from Indonesia for Singapore if you wish.

Batam 01° 07' 104° 07'

Again here you can check out of Indonesia here at Nongsa Point Marina then make the 10 mile journey across the straits to Singapore.

2012 Eastern Passage or Saumlaki Route

As you can see below some of the new destinations are not yet finalised but this is the Indonesian way of things, but please be assured that preparations are being made for your visit and as in past years you will be well received as you can read in the accounts linked on the STORIES page of our website

Saumlaki 07° 54' and 131° 22' July 30 - August 2

Saumlaki is an alternative port of entry to Indonesia for 2012, it has been available for Sail Indonesia yachts since 2008. The Tourism Department in Saumlaki has offered visiting yachts support in the same manner as the yachts in the Darwin – Kupang route.

On December 3 2012 Saumlaki was made a Port of Entry Indonesia but when the yachts arrive as in past few years the Customs, Immigration, Quarantine and Harbor Authorities have been arranged to come from Ambon to receive the incoming fleet.

The anchorage in Saumlaki is a little offshore but it is able to accommodate over 100 yachts and in 2009 as part of Sail Bunaken 127 boats arrived in Saumlaki. Further detail coordination will be done in the early February of 2012 and we will then give you more details information regarding the readiness of Government.

Banda 04° 32' 129° 52' Stopover

Banda is a must see destination and is one of the jewels of Indonesia. It is a volcanic island in the middle of Banda Sea, the island is very small and you can explore it in a few hours by foot. Banda is off the tourist route with only the most dedicated travellers finding their way there, there is no public transportation on the island but this is not a problem as everything is within a 45 minute walk. Many yachts have visited Banda in previous years and had a wonderful experience as you can see from the accounts on our Stories page.

If you plan to visit Banda try to read the historical novel Nathaniel's Nutmeg to give you some idea of the very long and rich history of this island. In the surrounding islands you can find many another natural attractions, such as Lonthor island where there are underwater gardens, while on the island itself there is a legend about a sacred well that can make you forever young and you can also find see the Nutmeg and Clove trees that made this place so famous are still standing after 100 years.

Buru 03° '17' 127° 04' August 14 - 17 Details to follow

Wakatobi 05° 20' 123° 32' August 20 – 23

Wakatobi actually a word made from the names of four islands in the area as follows; Wangi Wangi, Kalidupa, Tomea and Binongko, the anchorage has been changed to the town of Wanci, here you can experience some of the best diving in the world, there will also be a program of events for your entertainment. After you leave the Wakatobi Islands again you can then sail to Flores or Bali to rejoin the group of yachts in the Western Passage that went first to Kupang.

Bau Bau 05° 27' 122° 35' August 26 – 29

The regency of Bau Bau has arranged a dinner, cultural performances and presentations provided by the local and provincial government agencies.

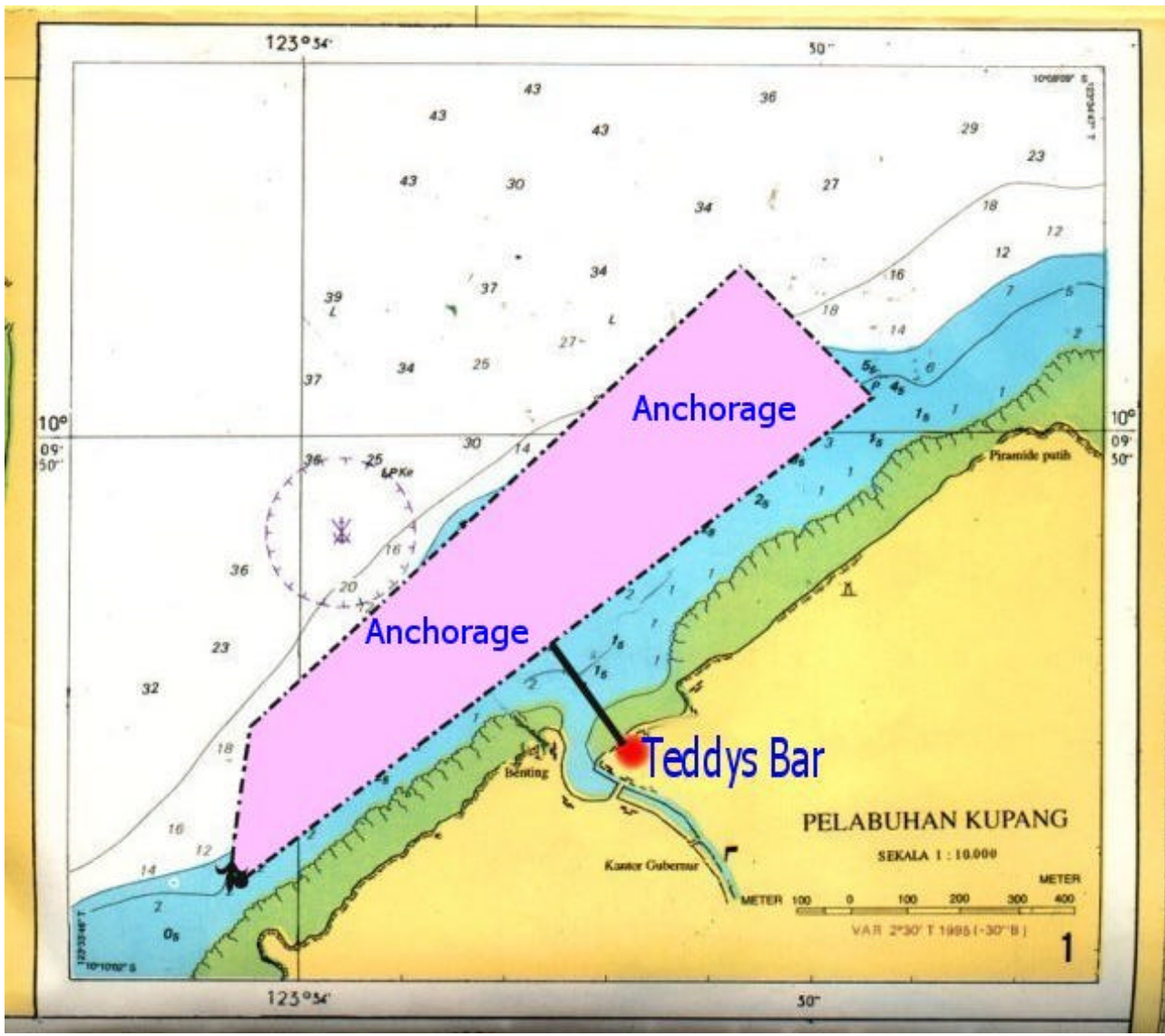
Takabonerate September 1 - 4 Details to follow

Selayar 06° 03 120° 25' September 11 - 14 Details to follow.

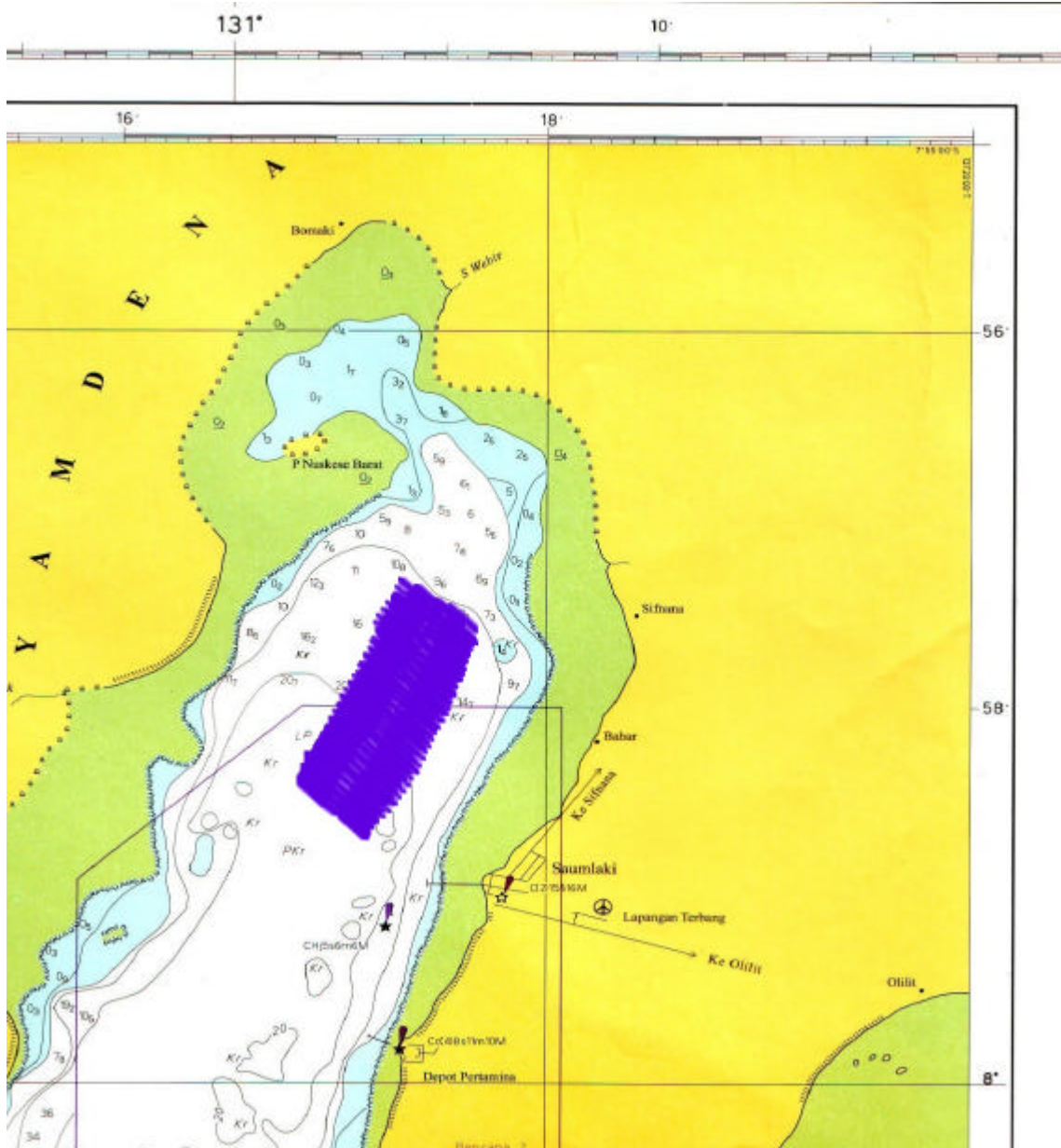
Makassar 5° 09' 119° 28' September 23 – 26

The program of events for Makassar will be posted on our web site in March.

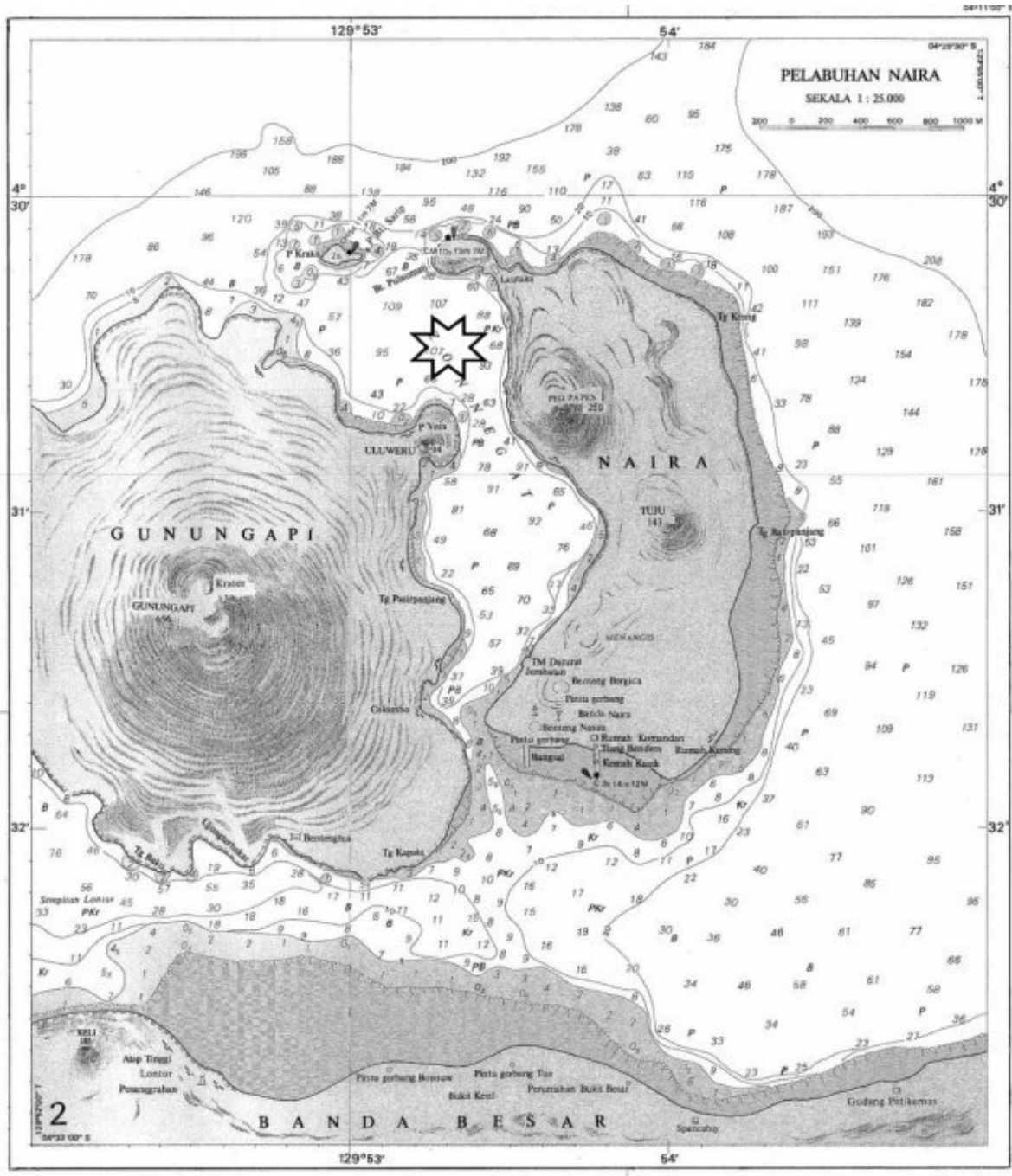
From Makassar Eastern Passage participants can then sail south to Flores or Bali to join the Western Passage yachts that went first to Kupang.



The Anchorage in Kupang



The Anchorage in Saumlaki



Anchorage area at Banda shown by the star

ENDS